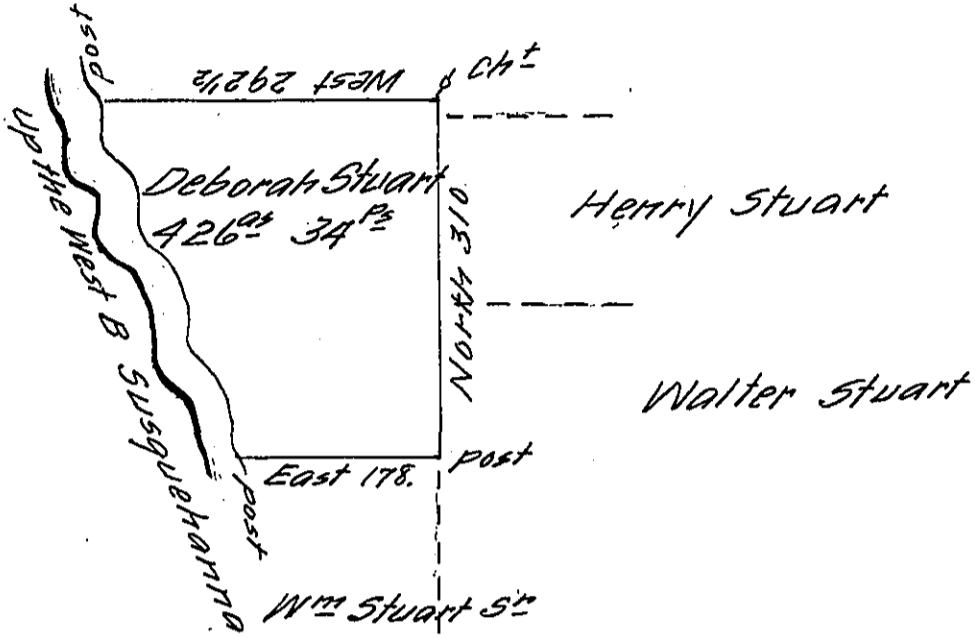


5

Pg. 456.
Wm Stuart

the Courses down the River are as follow

- N 19 W 70
- N 22 W 70
- N 18 W 134
- N 25 W 57



Situate on the South East Side of the West Branch of Susquehanna River about two Miles below the Mouth of big Moshannon Creek in Mifflin County Upper Bald Eagle Township Containing 426^{1/2} 34^{1/2} and the Usual allowance for Roads —

Surveyed the 12th Day of November 1792 in persuance of a Warrant Dated the 31st Day of July 1792.

Jo. J. Wallis D.S.

Daniel Brodhead Esq^r 56.

IN TESTIMONY that the above is a copy of the original remaining on file in the Department of Internal Affairs of Pennsylvania, made conformably to an Act of Assembly approved the 16th day of February, 1833, I have hereunto set my Hand and caused the Seal of said Department to be affixed at Harrisburg, this eighteenth day of January 1912.

Henry Howell
Secretary of Internal Affairs.